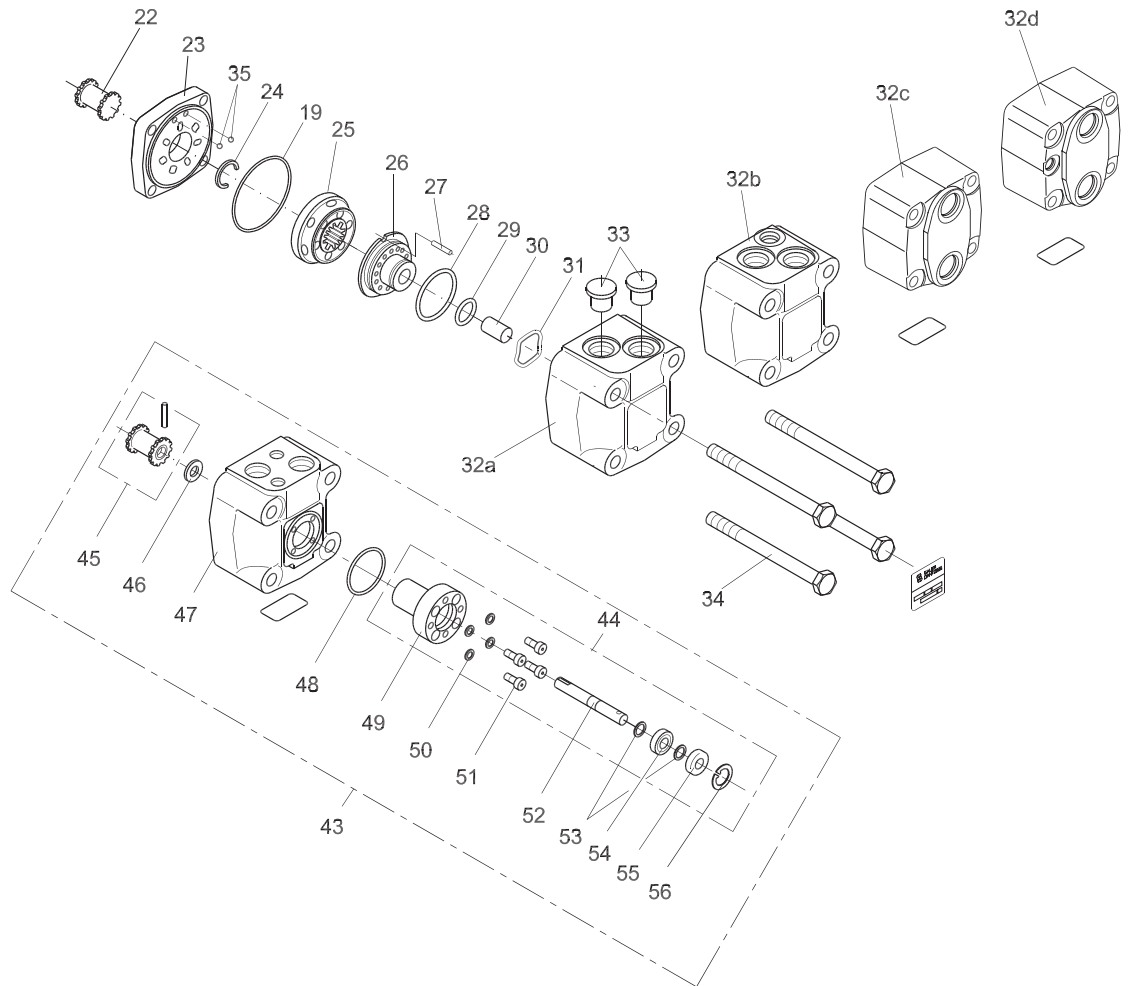



**Exploded View OMS
Series 3**



151-2090.11

Tightening torque: 

- Item 34: 75 - 80 N·m [660 - 705 lbf·in]
- Item 51: 4 - 6 N·m [35 - 55 lbf·in]

Spare Parts List

Item	Spare parts		Number per motor	
			Code No.	
1	<u>Dust seal ring</u> (p.t.o. shaft)	35 • 42 • 3.5 mm [1.38 • 1.65 • 0.14 in]	633B3198	1
		40 • 47 • 4.0 mm [1.57 • 1.85 • 0.16 in]	633B3356	1
2	<u>Bearing housing</u> OMS Standard flange OMS Standard flange and Pt.o. shaft OMS Special flange OMS A - 2 flange OMS Magneto flange OMS SAE B flange OMSW Metric standard OMSW SAE standard OMSW with brake nose		151F1534	1
			151F1549	1
			151F1536	1
			151F1685	1
			151F1858	1
			151F1864	1
			151F1535	1
			151F1620	1
	151F1852	1		
2a	<u>Mounting flange</u>		151F1827	1
3	<u>Shaft seal</u> Pt.o. shaft	35 • 52 • 5 mm [1.38 • 2,05 • 0.20 in] NBR	633B3197	1
		35 • 52 • 5 mm [1.38 • 2,05 • 0.20 in] FPM	633B3196	1
		40 • 60 • 6 mm [1.57 • 2.36 • 0.24 in] NBR	633B3355	1
4	<u>Parallel key</u>	Metric: A 10 • 8 • 45 mm for 32 mm cyl. shaft	682L8019	1
		Metric: B 6 • 6 • 20 mm for tap. shaft	682L8021	1
		SAE: 5/16 • 5/16 • 1 ¼ in for 1 ¼ in cyl. and tapered shaft	151-4109	1
		SAE: ¼ • ¼ • 1 ¼ in BS 46 for 1 in cylindrical shaft	682L8036	1
5	<u>Cylindrical shaft</u>	Metric: Ø32 mm with bearings incl. item 4	151F0112	1
		SAE: Ø1 ¼ in with bearings incl. item 4	151F0118	1
		SAE: Ø1 in with bearings incl. item 4	151F0127	1
6	<u>Splined shaft</u>	Metric: 1 ¼ in with bearings	151F0113	1
		SAE: 1 ¼ in with bearings	151F0119	1
		SAE: 1 in with bearings	151F0126	1
		SAE: 0.875 in with bearings	151F0138	1
7	Pt.o. shaft incl. bearing, DIN 9611		151F0116	1
8	<u>Washer metric version only</u>	20.5 • 44 • 4 mm	684X2530	1
9	<u>Castellated nut</u>	Metric: M20 • 1.5 mm	681X8235	1
		SAE: 1 - 20 UNEF	151-4154	1
10	<u>Tapered shaft</u>	Metric: 35 mm with bearings incl. item 4, (8) and 9	151F0114	1
		SAE: 1 ¼ in with bearings incl. item 4 and 9	151F0115	1
11	<u>Conical seal ring</u>		633B9023	1
12	<u>O-ring</u>	70 • 2 mm [2.75 • 0.08] NBR	633B1379	1
13	<u>Drain plug</u>	Metric: G ¼	151-1524	1
		SAE: 7/16 - 20 UNF	151-5439	1
14	<u>Washer</u>		684X2120	1
15	<u>Intermediate plate</u>	Metric:	151F1811	1
		SAE:	151F1812	1
16	<u>Mounting flange for OMSS</u>	Metric:	151F1817	1
17	<u>O-ring for OMSS</u>	100 • 3 mm [3.94 • 0.12 in] NBR	633B1486	1
18	<u>Cardan shaft</u> OMS/OMSW/OMSS 80 OMS/OMSW/OMSS 100 OMS/OMSW/OMSS 125 OMS/OMSW/OMSS 160 OMS/OMSW/OMSS 200 OMS/OMSW/OMSS 250 OMS/OMSW/OMSS 315 OMS/OMSW/OMSS 400 OMS/OMSW/OMSS 500	l = 70 mm [2.75 in]	151F1461	1
		l = 73 mm [2.87 in]	151F1462	1
		l = 78 mm [3.07 in]	151F1463	1
		l = 84 mm [3.31 in]	151F1464	1
		l = 91 mm [3.58 in]	151F1769	1
		l = 99.5 mm [3.92 in]	151F1770	1
		l = 111 mm [4.37 in]	151F1829	1
		l = 124.5 mm [4.90 in]	151F1830	1
		l = 120.5 mm [4.74 in]	151F1861	1
19	<u>O-ring</u>	82.5 • 2 mm [3.25 • 0.08 in] NBR	633B1431	3

Spare Parts List

Item	Spare parts				Number per motor	
					Code No.	
20	Gearwheel set					
	OMS/OMSW/OMSS 80	w = 14 mm [0.55 in]	151F1081	1		
	OMS/OMSW/OMSS 100	w = 17 mm [0.67 in]	151F1082	1		
	OMS/OMSW/OMSS 125	w = 22 mm [0.87 in]	151F1083	1		
	OMS/OMSW/OMSS 160	w = 28 mm [1.10 in]	151F1084	1		
	OMS/OMSW/OMSS 200	w = 35 mm [1.38 in]	151F1085	1		
	OMS/OMSW/OMSS 250	w = 44 mm [1.73 in]	151F1086	1		
	OMS/OMSW/OMSS 315	w = 55 mm [2.16 in]	151F1087	1		
	OMS/OMSW/OMSS 400	w = 68.4 mm [2.69 in]	151F1088	1		
	OMS/OMSW/OMSS 500	w = 68.4 mm [2.69 in]	151F1089	1		
22	Valve drive		OMS 80 - 400	151F1448	1	
			OMS 500	151F1862	1	
23	Channel plate			151F1821	1	
24	Stop ring (OMSS 200, 250, 315, 400 and 500 only)			151F1542	1	
25	Disc valve			151F1022	1	
26	Balance plate			151F1738	1	
27	Guide pin		∅ 5 mm [0.20 in], l = 14 mm [0.55 in] ISO 8752	682L9105	1	
28	O-ring		45 • 2 mm [1.77 • 0.08] NBR	633B1429	1	
			45 • 2 mm [1.77 • 0.08] FPM	633B1455	1	
29	O-ring		24 • 2 mm [0.94 • 0.08] NBR	633B1428	1	
			24 • 2 mm [0.94 • 0.08] FPM	633B1453	1	
30	Spacer			151F1449	1	
31	Spring washer			684X0097	1	
32a	Valve housing	sideport	without drain port	Metric:	151F1801	1
32a			without drain port	SAE	151F1805	1
32b			with drain port	SAE	151F1807	1
32c	endport		without drain port	SAE	151F1855	1
32d			with drain port	SAE	151F1856	1
33	Seal plug			633X0017	2	
34	Screw M10:					
	OMS/OMSW 80		l = 120 mm [4.72 in]	681X1349	4	
	OMS/OMSW 100, 125		l = 130 mm [5.12 in]	681X1350	4	
	OMS/OMSW 160, 200		l = 140 mm [5.51 in]	681X1352	4	
	OMS/OMSW 250		l = 150 mm [5.91 in]	681X1353	4	
	OMS/OMSW 315		l = 160 mm [6.30 in]	681X1356	4	
	OMS/OMSW 400, 500		l = 180 mm [7.09 in]	681X0038	4	
	OMSS 80, 100		l = 100 mm [3.94 in]	681X1347	4	
	OMSS 125, 160		l = 110 mm [4.33 in]	681X1348	4	
	OMSS 200		l = 120 mm [4.72 in]	681X1349	4	
OMSS 250		l = 130 mm [5.12 in]	681X1350	4		
OMSS 315		l = 140 mm [5.52 in]	681X1352	4		
OMSS 400, 500		l = 150 mm [5.91 in]	681X1353	4		
35	Check valve ball **			∅3/16 in	689X1005	2
43	Tacho valve housing, complete			151F0137	1	
44	Tacho connection, complete			151F1031	1	
45	Tacho valve drive + guide pin			151F1032	1	
46	Spacer ring			151F1502	1	
47	Tacho valve housing			151F1802	1	
48	O-ring		40 • 2 mm [1.57 • 0.08 in]	633B1378	1	
49	Bearing housing		5.6 • 8.5 • 1 mm [0.22 • 0.33 • 0.04 in]	151F1499	1	
50	Washer			684X2012	4	
51	Screw M5;		l = 15 mm [0.59 in]	681X1880	4	
52	Tacho drive shaft			151F1500	1	
53	Locking ring		UR 6 • 0.7 mm [0.24 • 0.03 in] DIN 6799	682L4922	2	
54	Bearing		8 • 22 • 7 mm [0.31 • 0.87 • 0.28 in]	981X1020	1	

** OMSW with brake nose and drain port. Do not have check valve

Spare Parts List

Item	Spare parts			Number per motor	
				Code No.	
55	Shaft seal			633B3175	1
56	Locking ring N 22 • 1 mm [0.87 • 0.04 in] DIN 472			682L4008	1
A	Set of seals NBR	OMS, OMSW	item 1, 3, 11, 12, 19, 28 and 29	151F0111	1
		OMS (p.t.o.)	item 1, 3, 11, 12, 19, 28 and 29	151F0117	1
B	Set of seals NBR	OMS, OMSW, OMSS	item 11, 17, 19, 28 and 29	151F0103	1
C	Set of seals FPM	OMS, OMSW, OMSS	item 1, 3, 28 and 29	151F0109	1
D	Set of seals NBR	OMSS	item 11 and 17	151F1033	1

NBR: Buna N, Perbunan (ISO1629)
 FPM: Viton (ISO 1629)